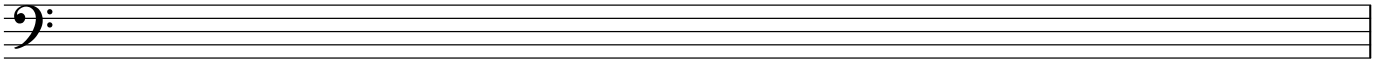


## Practice writing the Bass Clef Symbol



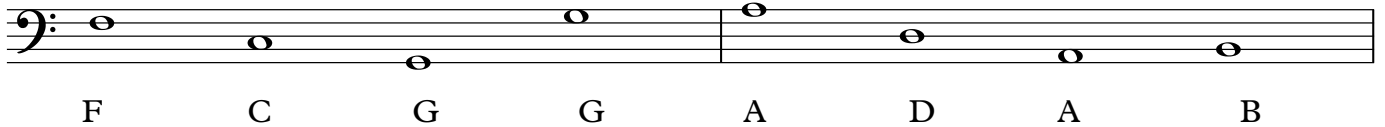
What is the phrase for the five notes on the line? **Good Burritos Don't Fall Apart**

What are the five notes on the line? **G B D F A**

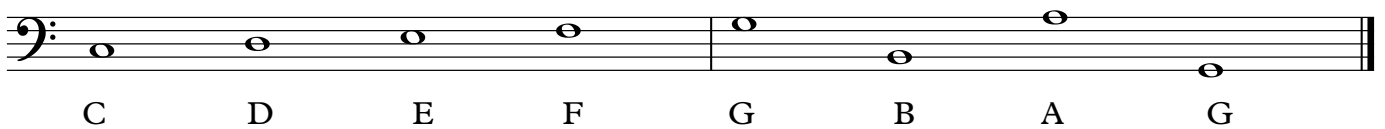
What is the phrase for the four notes on the spaces? **All Cows Eat Grass**

What are the four notes on the spaces? **A C E G**

## Name the notes



A musical staff with a bass clef. The first measure contains four notes on the line: F (first space), C (second space), G (third space), and G (fourth space). The second measure contains four notes on the space: A (first space), D (second space), A (third space), and B (fourth space).



A musical staff with a bass clef. The first measure contains four notes on the space: C (first space), D (second space), E (third space), and F (fourth space). The second measure contains four notes on the line: G (first line), B (second line), A (third line), and G (fourth line).